



TIIG

INJURY SURVEILLANCE IN THE NORTH WEST OF ENGLAND

Injury attendances to Stepping Hill Emergency Department

April 2013 to March 2014

This report summarises recorded injury attendances to Stepping Hill Hospital Emergency Department (ED) between April 2013 and March 2014.

Between April 2013 and March 2014 there were 33,887 injury attendances to Stepping Hill Hospital ED. Males accounted for over half (53%) of all attendances. The month with the highest injury attendances was July (n=3,370) with March having the lowest attendances (n=2,433) (**Figure 1**). The majority (61%) of attendances did not have a specific injury group recorded. Of the specified injury groups, falls (14%) accounted for the highest proportion followed by sports injury (12%), road traffic collision (RTC) (6%) and assault (3%) (**Table 1**).

For all injuries, the highest proportion of attendances were for persons aged 5 to 19 (25%) and 20 to 34 (21%) years (**Figure 2**). Over half (51%) of fall attendees were aged 65 or over. Over four in ten (45%) of assault attendees were aged 20 to 34 years. Almost four in ten (38%) of RTC attendees were aged 20 to 34 years (**Figure 3**).

Of those that stated an ethnicity, the majority (87%) were white. (**Table 2**).

The disposal of a patient can give an indication of the severity of the injuries sustained. Almost six in ten (58%) of attendees were discharged, over a quarter

(27%) were referred, and 14% were admitted (**Table 3**).

Table 4 shows the arrival methods of attendees at Stepping Hill ED. Over seven in ten (71%) arrived by car and 18% by ambulance.

Table 5 presents data for assault attendees to Stepping Hill Hospital ED. The majority of attendees were male (72%) and 45% were aged 20 to 34 years. Over a third (35%) of assault attendances arrived by ambulance.

Figure 1: Stepping Hill ED: Total injury attendances by gender and month, April 2013 to March 2014

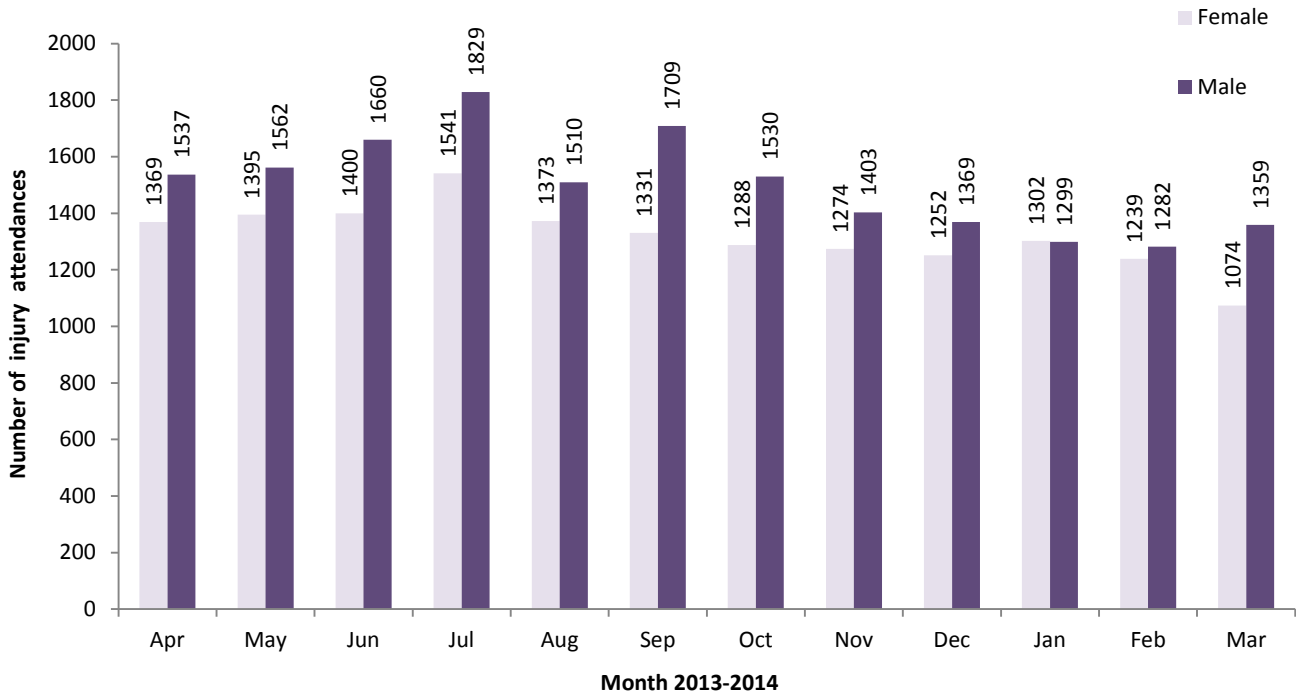


Table 1: Stepping Hill ED: Total injury attendances by injury group and month, April 2013 to March 2014

Injury group	Apr	May	Jun	Jul	Aug	Sep	Oct	Nov	Dec	Jan	Feb	Mar	Total	%
Other injury	1767	1780	1899	2079	1788	1788	1678	1533	1568	1556	1469	1643	20548	61
Fall	396	509	402	453	402	410	384	451	415	451	437	20	4730	14
Sports injury	404	358	387	365	260	456	348	314	260	281	259	414	4106	12
RTC	168	115	170	160	182	142	192	178	174	150	163	176	1970	6
Assault	69	99	74	83	84	108	118	95	103	82	93	72	1080	3
Burns and scalds	56	46	64	90	74	73	55	58	58	52	58	61	745	2
Bites and stings	46	50	64	140	93	63	43	48	43	29	42	47	708	2
Total	2906	2957	3060	3370	2883	3040	2818	2677	2621	2601	2521	2433	33887	100

Figure 2: Stepping Hill ED: Total injury attendances by age group and month, April 2013 to March 2014

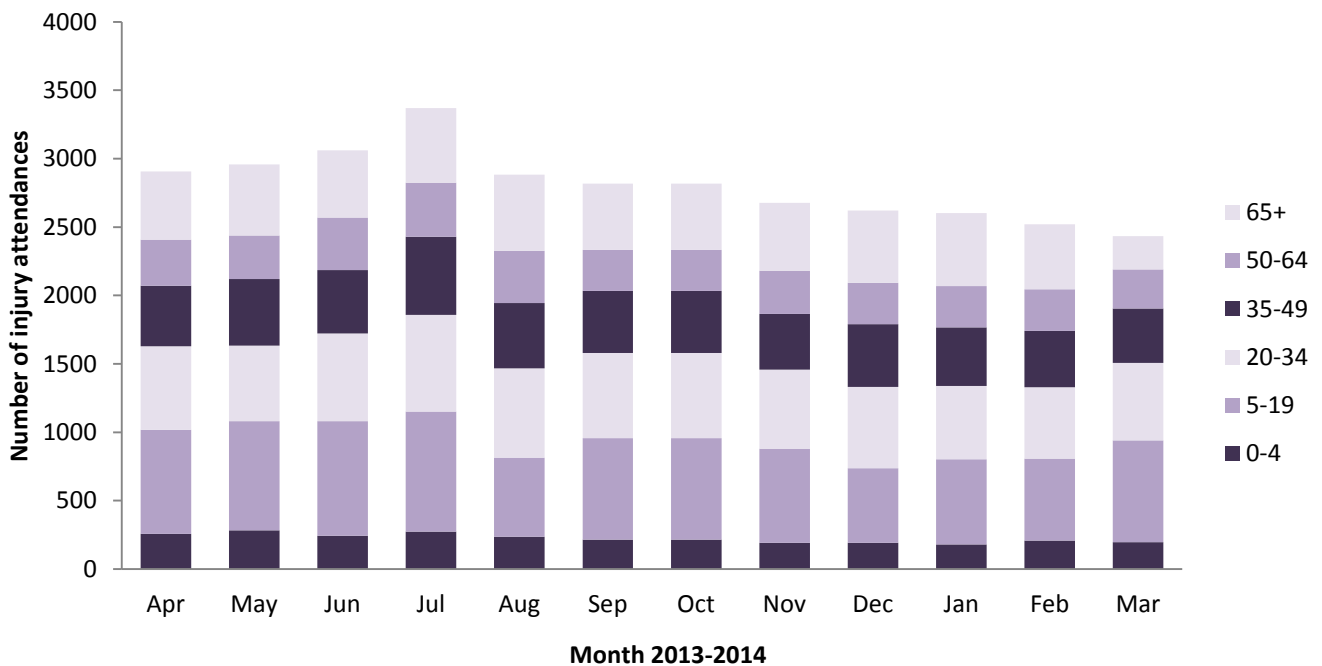


Figure 3: Stepping Hill ED: Total injury attendances by age group and injury group, April 2013 to March 2014

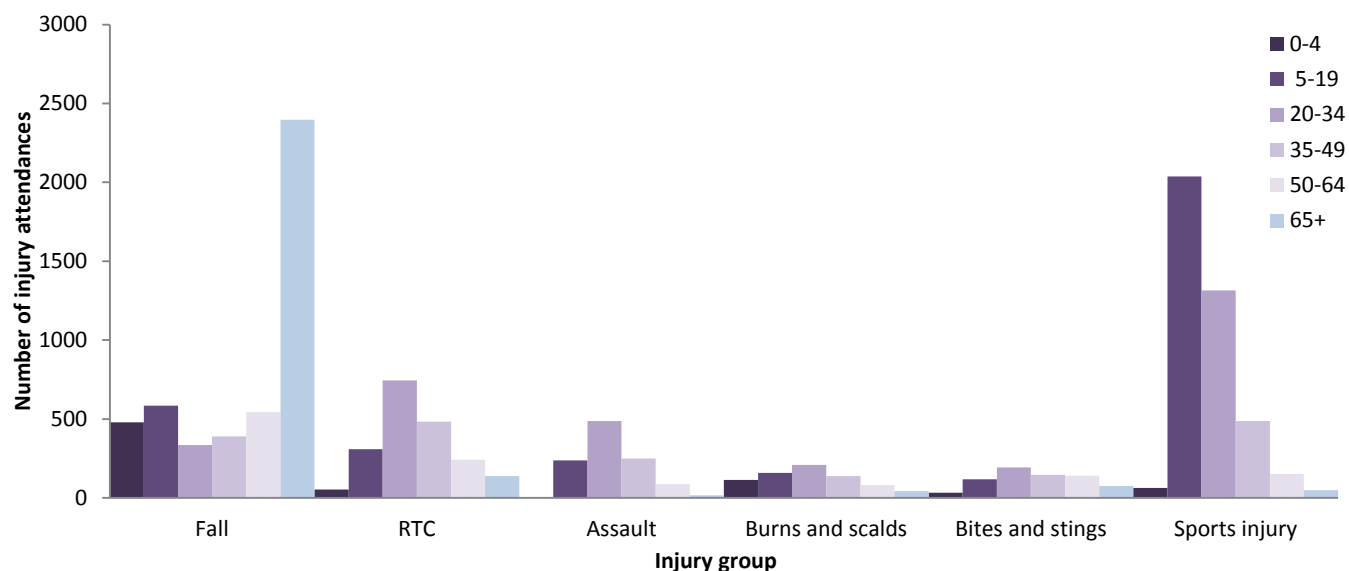


Table 2: Stepping Hill ED: Total injury attendances by ethnicity and month, April 2013 to March 2014¹

Ethnicity	Apr	May	Jun	Jul	Aug	Sep	Oct	Nov	Dec	Jan	Feb	Mar	Total	%
White	2521	2594	2600	2895	2481	2627	2426	2315	2286	2284	2222	2150	29401	87
Not stated	331	298	378	397	336	341	325	280	252	235	229	227	3629	11
Mixed	16	21	20	17	20	23	20	15	19	11	24	16	222	1
Pakistani	14	14	18	17	11	16	13	17	16	26	16	11	189	1
Any other ethnic group	0	7	19	11	10	5	6	13	19	9	9	9	117	0
Indian	7	10	9	8	10	7	7	9	9	10	***	***	93	0
Black	12	5	8	9	8	6	7	13	<10	<10	***	7	92	0
Any other Asian background	***	***	<6	<10	<10	10	6	7	11	11	10	***	83	0
Chinese	***	***	***	7	***	***	<6	<10	0	7	5	6	49	0
Bangladeshi	0	0	0	***	0	***	***	***	***	***	0	0	12	0
Total	2906	2957	3060	3370	2883	3040	2818	2677	2621	2601	2521	2433	33887	100

Table 3: Stepping Hill ED: Total injury attendances by method of disposal and month, April 2013 to March 2014

Disposal	Apr	May	Jun	Jul	Aug	Sep	Oct	Nov	Dec	Jan	Feb	Mar	Total	%
Discharged	1660	1703	1846	1937	1633	1812	1669	1504	1457	1486	1436	1500	19643	58
Referral/follow-up	809	802	782	908	811	778	760	767	724	699	707	678	9225	27
Admitted	423	432	410	472	405	420	362	370	418	392	362	246	4712	14
Other	14	20	22	53	34	30	27	36	22	24	16	9	307	1
Total	2906	2957	3060	3370	2883	3040	2818	2677	2621	2601	2521	2433	33887	100

¹ Please note that all numbers less than five have been suppressed in line with patient confidentiality and if there is only one number <5 in a category then two numbers will be suppressed at the next level.

Table 4: Stepping Hill ED: Total injury attendances by arrival mode and month, April 2013 to March 2014²

Arrival mode	Apr	May	Jun	Jul	Aug	Sep	Oct	Nov	Dec	Jan	Feb	Mar	Total	%
Car	2099	2113	2217	2469	1970	2172	1965	1886	1788	1796	1751	1870	24096	71
Ambulance	489	547	532	553	596	564	526	516	574	582	509	279	6267	18
Bus	96	109	102	134	108	100	96	83	77	63	82	110	1160	3
Taxi	72	96	73	83	98	95	97	87	94	68	78	77	1018	3
Walked	51	63	58	90	81	71	85	60	54	50	62	63	788	2
Other	83	15	53	18	16	22	21	19	16	27	14	15	319	1
Police	11	11	13	7	9	11	16	20	<15	7	<15	11	143	0
Public transport	***	***	<15	8	***	***	6	6	***	<10	11	<10	70	0
Bicycle	***	***	***	8	***	***	6	0	0	***	***	***	26	0
Total	2906	2957	3060	3370	2883	3040	2818	2677	2621	2601	2521	2433	33887	100

Table 5: Stepping Hill ED: Total assault attendances by gender, arrival mode and age group, April 2013 to March 2014²

	Assault attendees (n=1,080)		All injury attendees (n=33,887)
	n	%	%
Gender			
Male	774	72	53
Female	306	28	47
Arrival mode			
Ambulance	380	35	18
Other	700	65	82
Age group			
0 - 4	***	0	8
5 - 19	237	22	25
20 - 34	487	45	21
35 - 49	250	23	16
50 - 64	87	8	12
65 plus	<20	1	17

Published April 2014

Jennifer Brizell (TIIG researcher)

Centre for Public Health, Faculty of Education, Health and Community, Liverpool John Moores University
2nd Floor, Henry Cotton Campus, 15-21 Webster Street, Liverpool, L3 2ET

Tel: 0151 231 4500 Email: j.s.brizell@ljmu.ac.uk

Website: www.tiig.info (please note all data requests should be made through the TIIG website)

Twitter: [@TIIG_CPH](https://twitter.com/TIIG_CPH)

² Please note that all numbers less than five have been suppressed in line with patient confidentiality and if there is only one number <5 in a category then two numbers will be suppressed at the next level.